

# FISFIX

## | Anchoring Epoxy

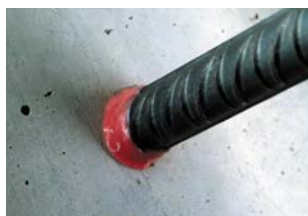
FIDSTRONG's two-component epoxy rebar anchoring system features high bond strength and excellent durability, making it suitable for anchoring rebar and threaded rods.



### Features

- High bonding performance with heavy-duty load-bearing capacity
- Suitable for both cracked and uncracked concrete
- Rapid curing, effective at temperatures as low as -10°C when pre-conditioned to 5°C
- Extended working time, offering greater flexibility during installation
- FISFIX 390: Suitable for use in dry or damp drill holes
- FISFIX 450: Suitable for use in various scenarios, including underwater applications

### Applications



### Product Information

Properties	FISFIX 390	FISFIX 450
Mix Ratio A:B	3:1	2:1
Packaging	390mL	450mL
Shelf Life	12 months in original, unopened packaging.	
Storage	Store in a cool, dry place, away from direct sunlight, at temperatures between 5°C and 25°C (41° F and 77° F).	



Add: No. 111, Fengpudadao Rd., Shanghai, China  
 Email: info@fidstrong.com

Tel/whatsapp: +86 189 1732 2049  
 Website: www.fidstrong.com

## Technical Performance Properties

Properties		FISFIX 390	FISFIX 450
Operable Time	10°C	80 min.	70 min.
	20°C	60 min.	50 min.
	30°C	40 min.	30 min.
Cured Time	10°C	48 hrs.	45 hrs.
	20°C	24 hrs.	20 hrs.
	30°C	12 hrs.	10 hrs.
Tensile Strength		24 MPa	26 MPa
Bending Strength		80 MPa	91 MPa
Compressive Strength		92 MPa	101 MPa
Steel-Steel Shear Strength		16 MPa	17 MPa
Bonding Strength to C25/30 Concrete (Ø25 rebar)		22 MPa	23 MPa
Thixotropy Index		4	4

## Load Table

Steel Bar Diameter (mm)	Drill Hole Diameter (mm)	Drill Hole Depth (mm) <sup>2</sup>	Epoxy Usage (mL) <sup>2</sup>	Max Tensile Load (kN) <sup>3</sup>	
				Grade 40	Grade 60
8	12	≥ 100	7.5	14.1	20.8
10	14	≥ 100	10.3	22.0	32.6
12	15	≥ 120	14.1	31.7	46.9
16	20	≥ 160	33.5	56.3	83.4
18	22	≥ 180	45.6	71.2	105.6
20	25	≥ 200	65.4	87.9	130.3
25	32	≥ 250	134.0	137.4	203.6
28	35	≥ 280	179.5	172.3	255.4
32	40	≥ 320	267.9	225.1	333.6

### Note :

- 1.The drill hole depth listed in the table represents the minimum embedment depth required for a single rebar to reach yield strength, under conditions without edge or spacing limitations. For embedment depth under other conditions, please consult our technical support.
- 2.The epoxy usage listed in the table is based on 2/3 of the drill hole volume.
- 3.The data listed in the table corresponds to the maximum tensile load at rebar yield strength. The yield strength of Grade 40 rebar is 280 MPa, and for Grade 60 rebar, it is 415 MPa.